



BIKE LANES & ONE-WAY STREETS

FEBRUARY 25th 7:00-8:00PM

A VIRTUAL PUBLIC INFORMATION SESSION

For

Shared Winter Streets and Spaces Grant

Shared Winter Streets and Spaces

Baker/Polito administration Covid-related funding for **quick-build improvements** to sidewalks, curbs, streets, and parking areas in support of safe walking, biking, and community activities



- Application date: **March 5**; award by **March 31**
- Project completion and spending deadline is **May 31, 2021**
- For more information:

<https://www.mass.gov/shared-winter-streets-and-spaces-grant-program>

Grant Team Members

- Veronica Kell - Chair, Select Board
- Emy Hoff - Director, Recreation Commission
- Bonnie Fitzpatrick - Assistant Director, Recreation Commission
- Emily Austin-Bruns - Recreation Commission
- Rachel Palmer - Recreation Commission
- Jennifer Eaton - Conservation Commission
- Joan Savoy - Chair, Townsend Affordable Housing Trust
- Joan Wotkowicz - Board of Directors, Squannacook Greenways, Inc.
- Beth Faxon - Administrator, Planning Board and Zoning Board of Appeals
- Carol Hoffses - Planning Board
- Jim Kreidler - Administrator, Town of Townsend
- James Smith - Superintendent, Highway Department
- Roger Rapoza - Superintendent, Cemetery and Parks
- Margaret Kent - Planner, Kittelson & Associates, Inc.
- Adria Boynton - Resiliency Specialist, Weston & Sampson

Bill Rideout – Moderator of Information Session

Goals

- Increase awareness of parks accessible from the center of town: Howard Park, Old Meetinghouse Park, Squannacook River Rail Trail
- Provide safe walkable and bikeable routes for school children, seniors, and all town residents
- Encourage spending time outside in our community with social distancing

FOCUS

Re-imagining streets for access to the rail trail and public parks

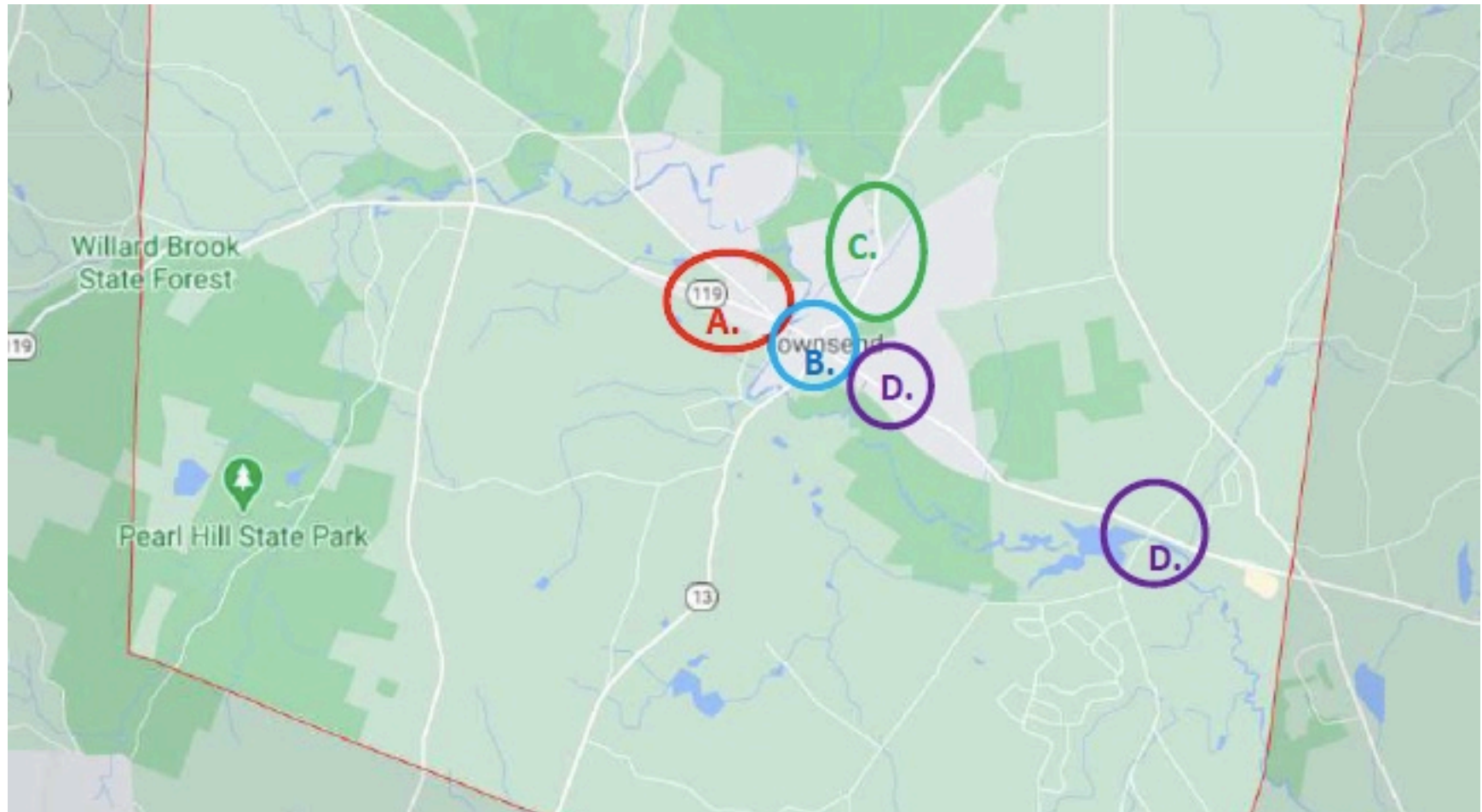
- Crosswalks
- Wayfinding signs
- Bike Racks & repair stations
- Bike Lanes
- Proposed one-way street



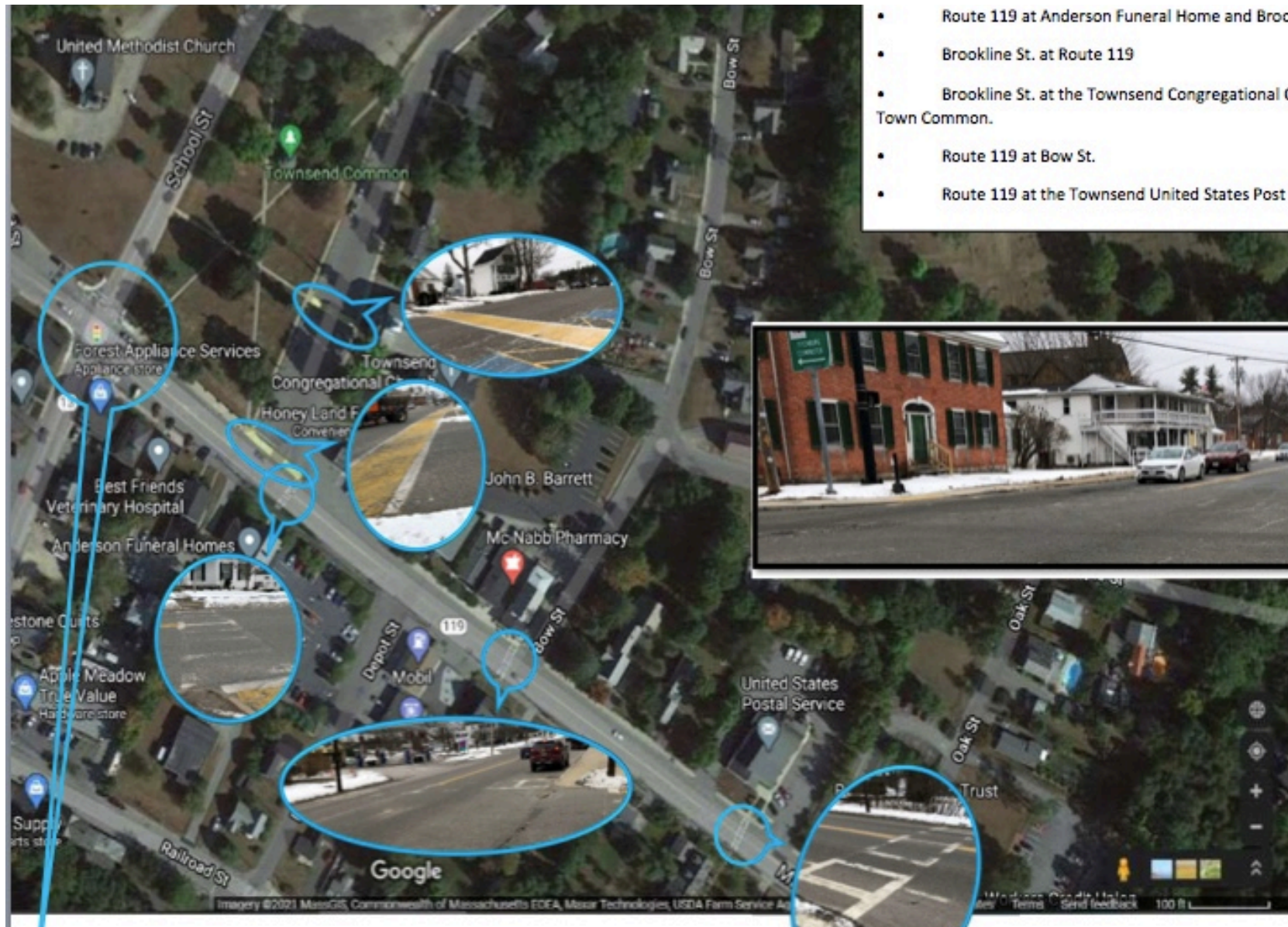
Crosswalks

EMY HOFF

Crosswalks



Crosswalks at the Common



- Route 119 at Anderson Funeral Home and Brookline St.
- Brookline St. at Route 119
- Brookline St. at the Townsend Congregational Church and Town Common.
- Route 119 at Bow St.
- Route 119 at the Townsend United States Post Office.



Crosswalks at Spaulding Memorial School



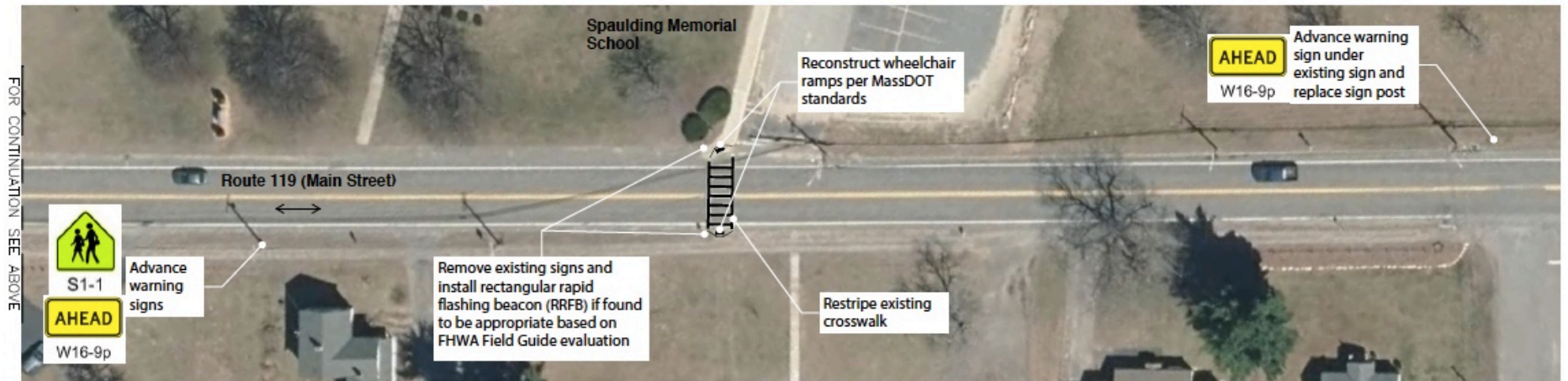
- At the softball field behind Spaulding Memorial School crossing Route 119.
- At Spaulding Memorial School crossing Route 119 at its parking lot.
- At the intersection of Route 119 and Turnpike Road.



RRFB at Spaulding Memorial School



Pedestrian Crossings at Route 119 & Softball Field



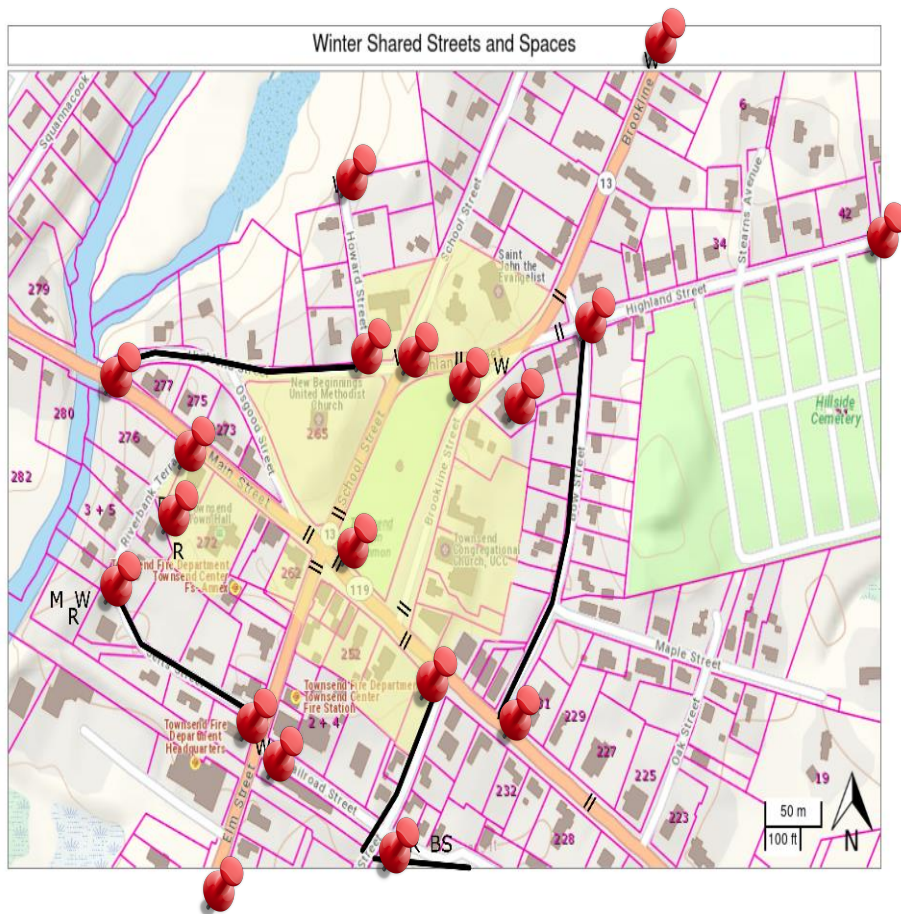
Pedestrian Crossings at Route 119 Spaulding Memorial School



Wayfinding Signs

EMILY AUSTIN-BRUNS

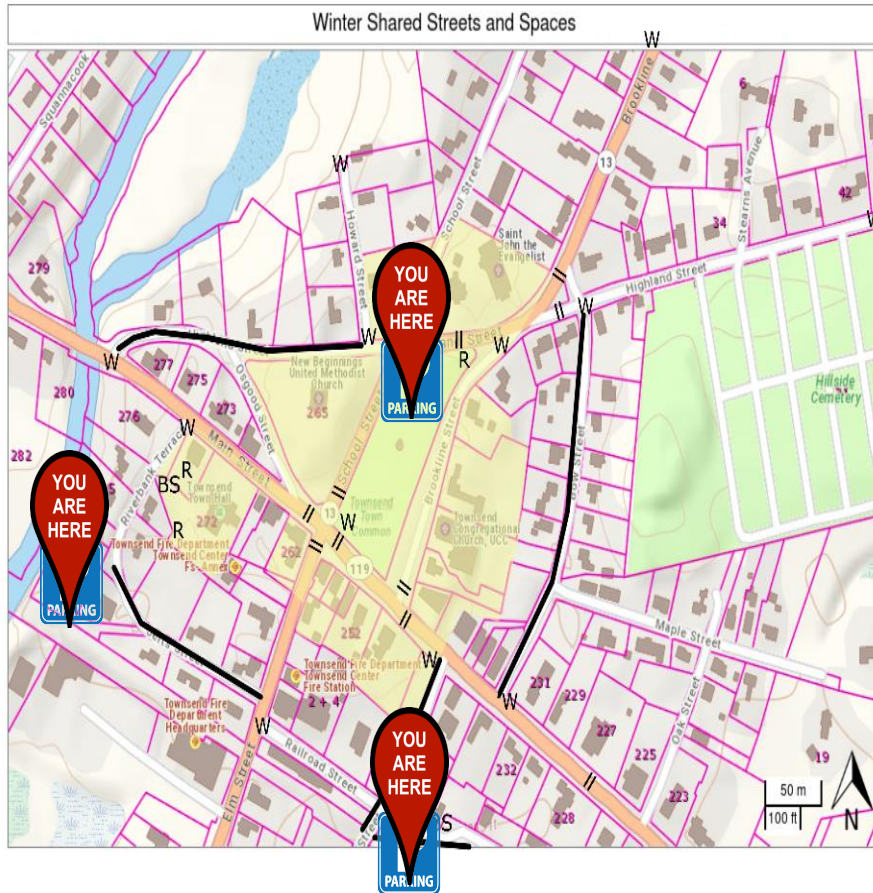
Wayfinding Signs, etc.



- 23 locations around town
 - Historic District

Wayfinding Signs, etc.

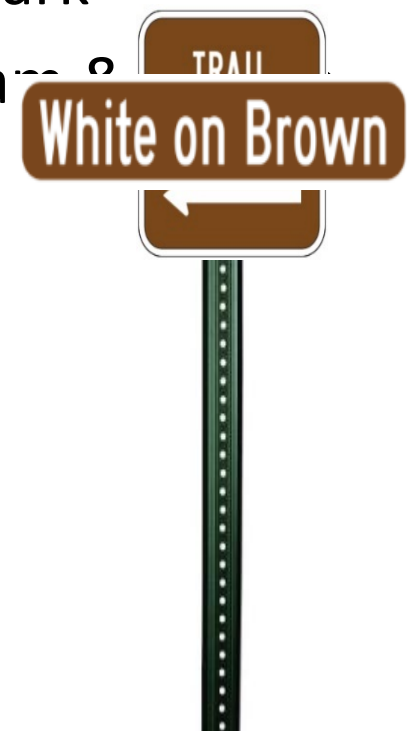
- Parking
- You Are Here



Wayfinding Signs, etc.



- Highlight Hiking Trails
 - Old Meetinghouse Park
 - Howard Park



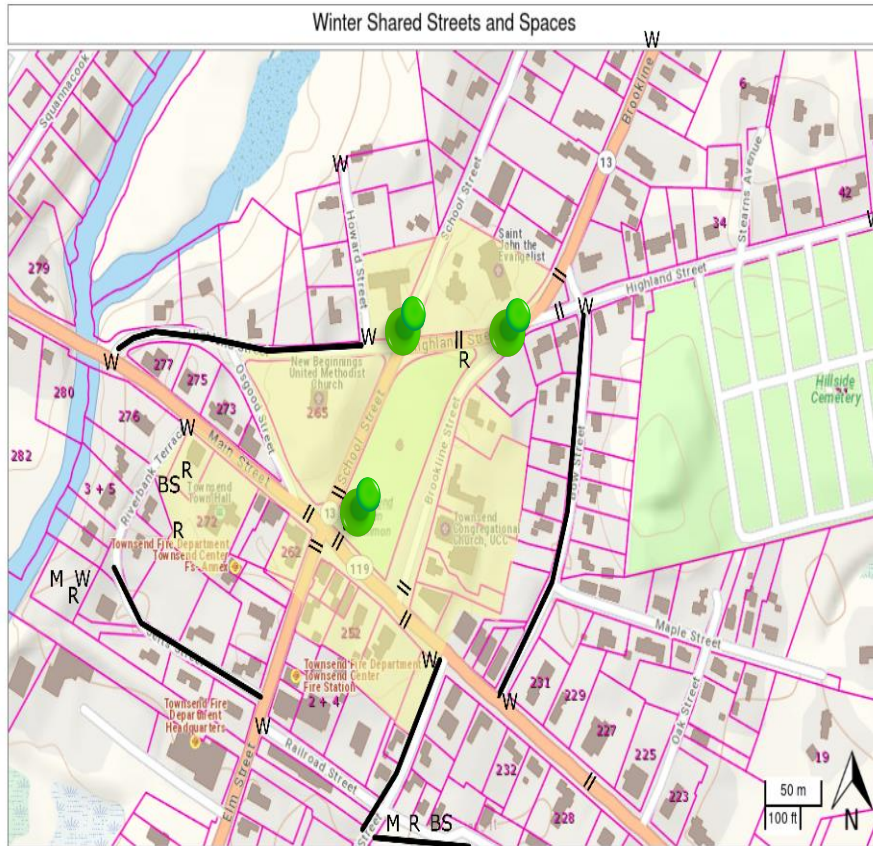
Wayfinding Signs, etc.



- Highlight Bike Routes



Wayfinding Signs, etc.



Wayfinding Signs, etc.



Bike Racks & Repair Stations

JENNIFER EATON

Bike Racks and Repair Stations

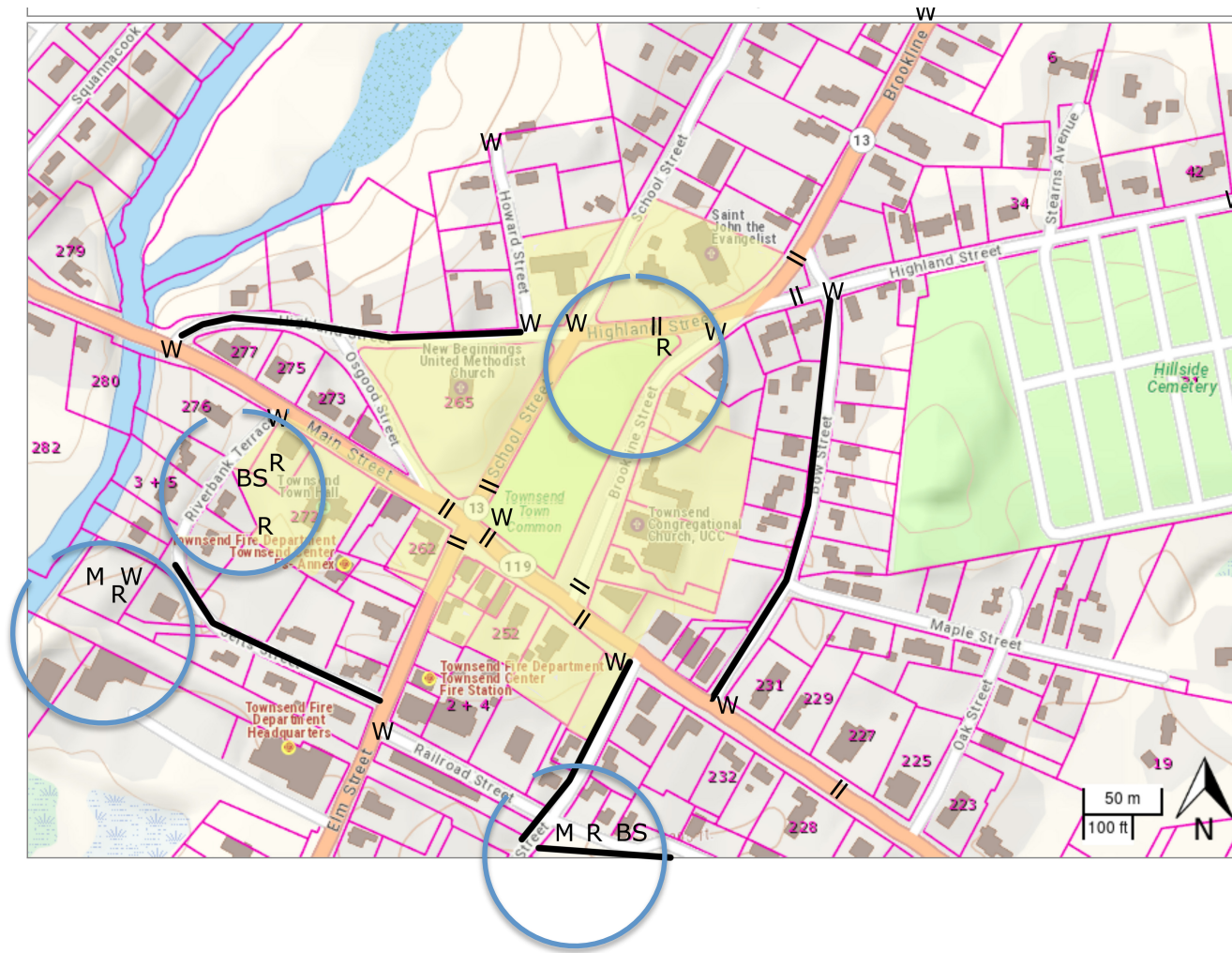


Single-Sided Grid Bike Rack – 4 bike capacity, black



Bike Repair Stand w/ heavy-duty air pump (w/ gauge), powdered-coated, hunter green

Proposed Locations



Legend:

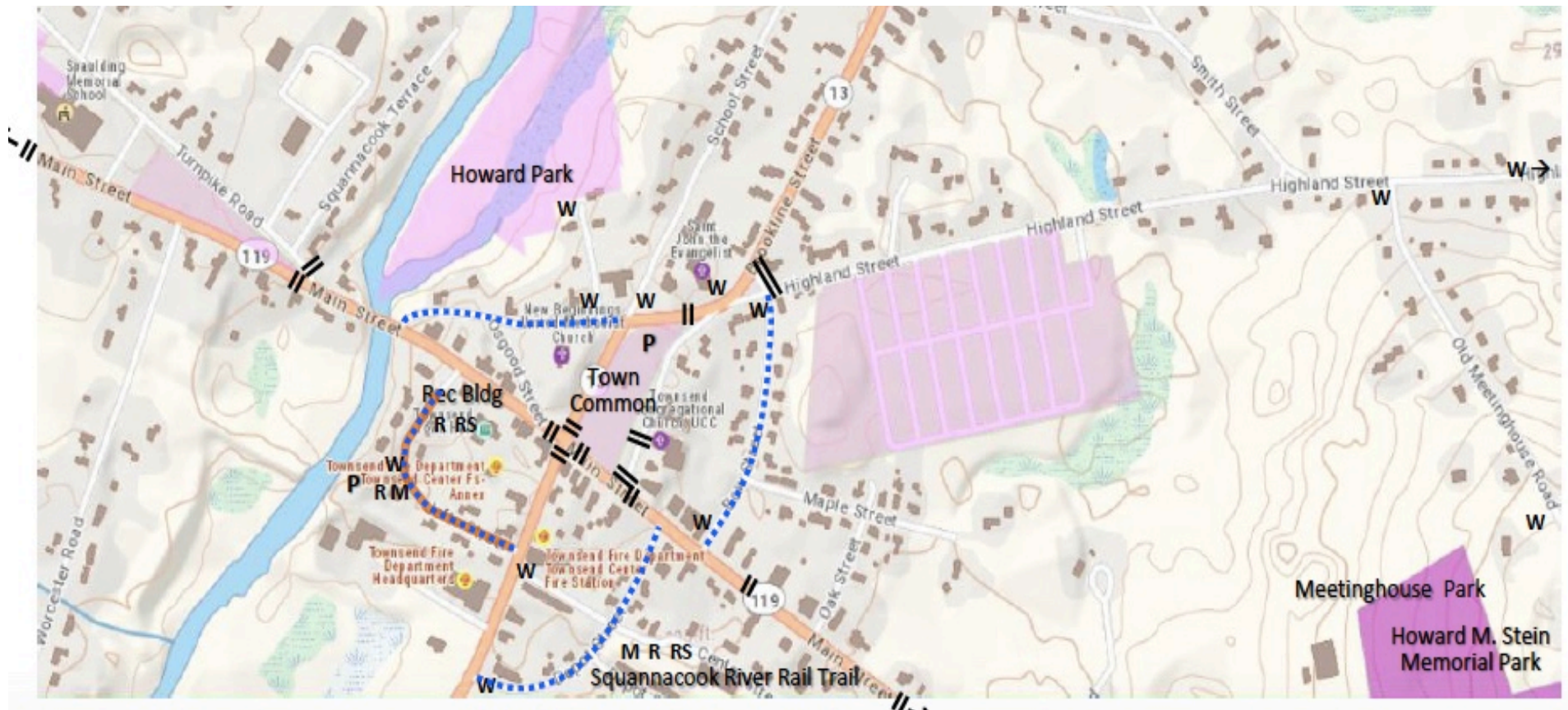
= - crosswalk
W - wayfinding signs
M - "you are here" map
R - bike rack &
BS - bike repair station

— - bike lane
— - historic area

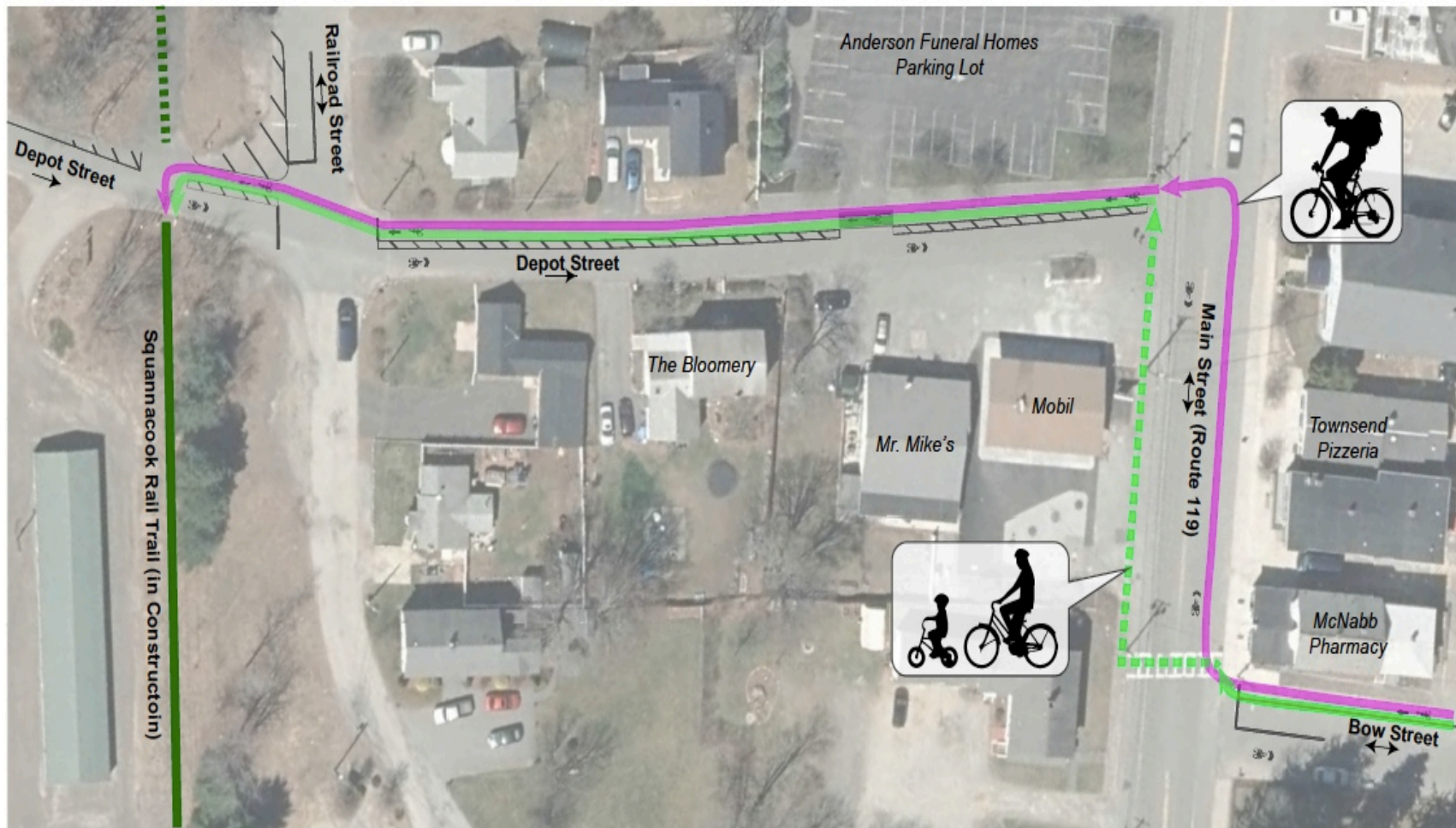
Bike Lanes

JOAN WOTKOWICZ

Proposed Bike Lanes



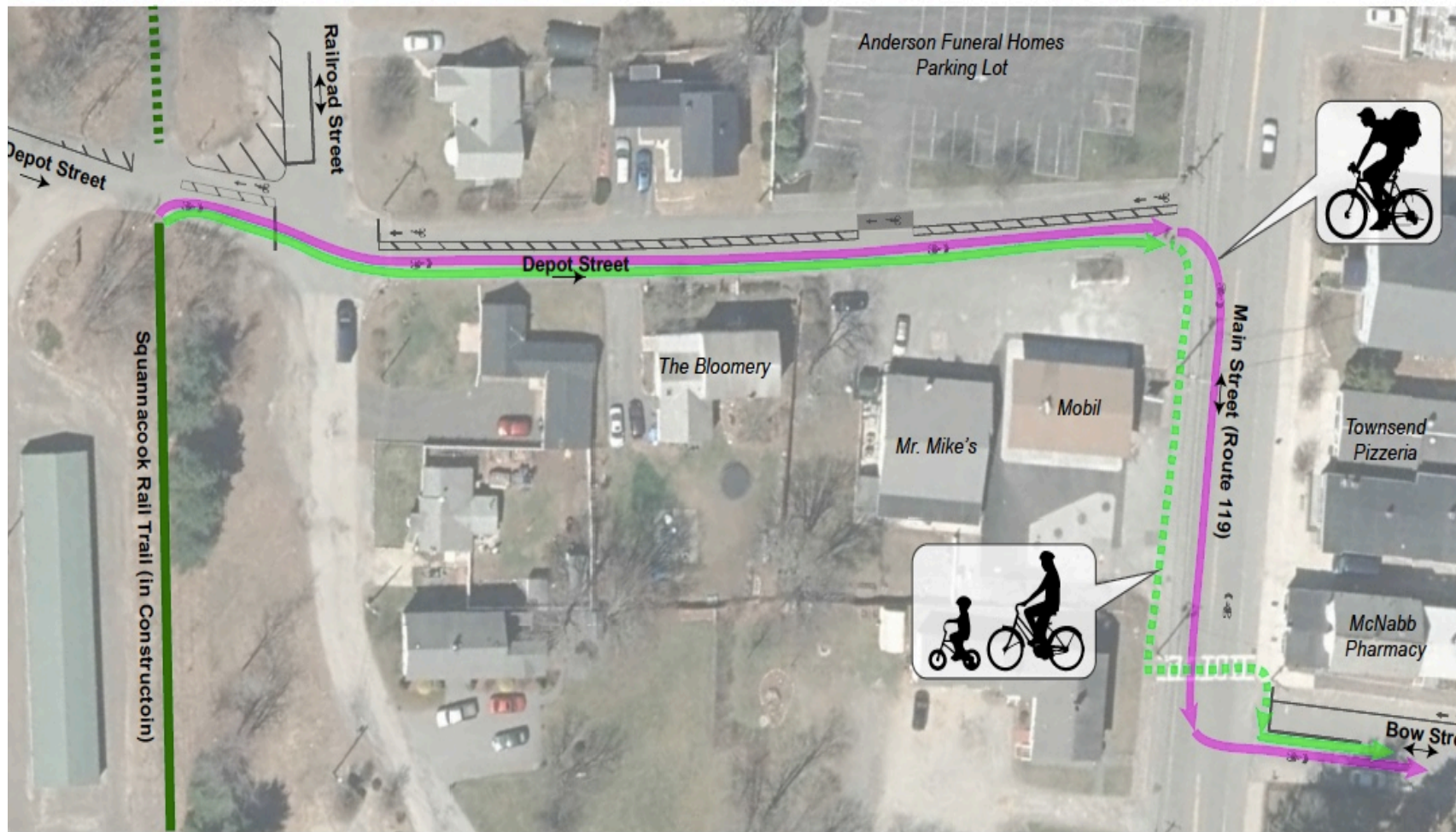
Bike Route from Bow St to Depot St



- "Confident cyclist" route from Bow Street to Depot Street
- "Interested but concerned cyclist" route from Bow Street to Depot Street
- - - "Interested but concerned cyclist" walking route on Main Street (Route 119)



Bike Route from Depot St to Bow St

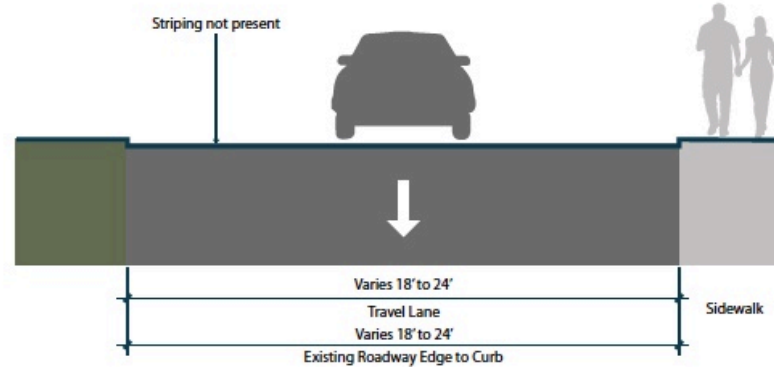


- "Confident cyclist" route from Depot Street to Bow Street
- "Interested but concerned cyclist" route from Depot Street to Bow Street
- - - "Interested but concerned cyclist" walking route on Main Street (Route 119)

Bike Lanes – Cross Section

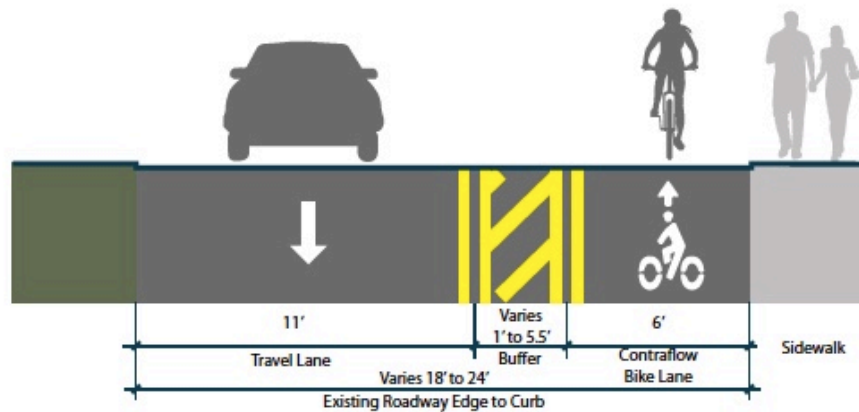
Existing

Bow Street from Maple Street to Highland Street (NB)

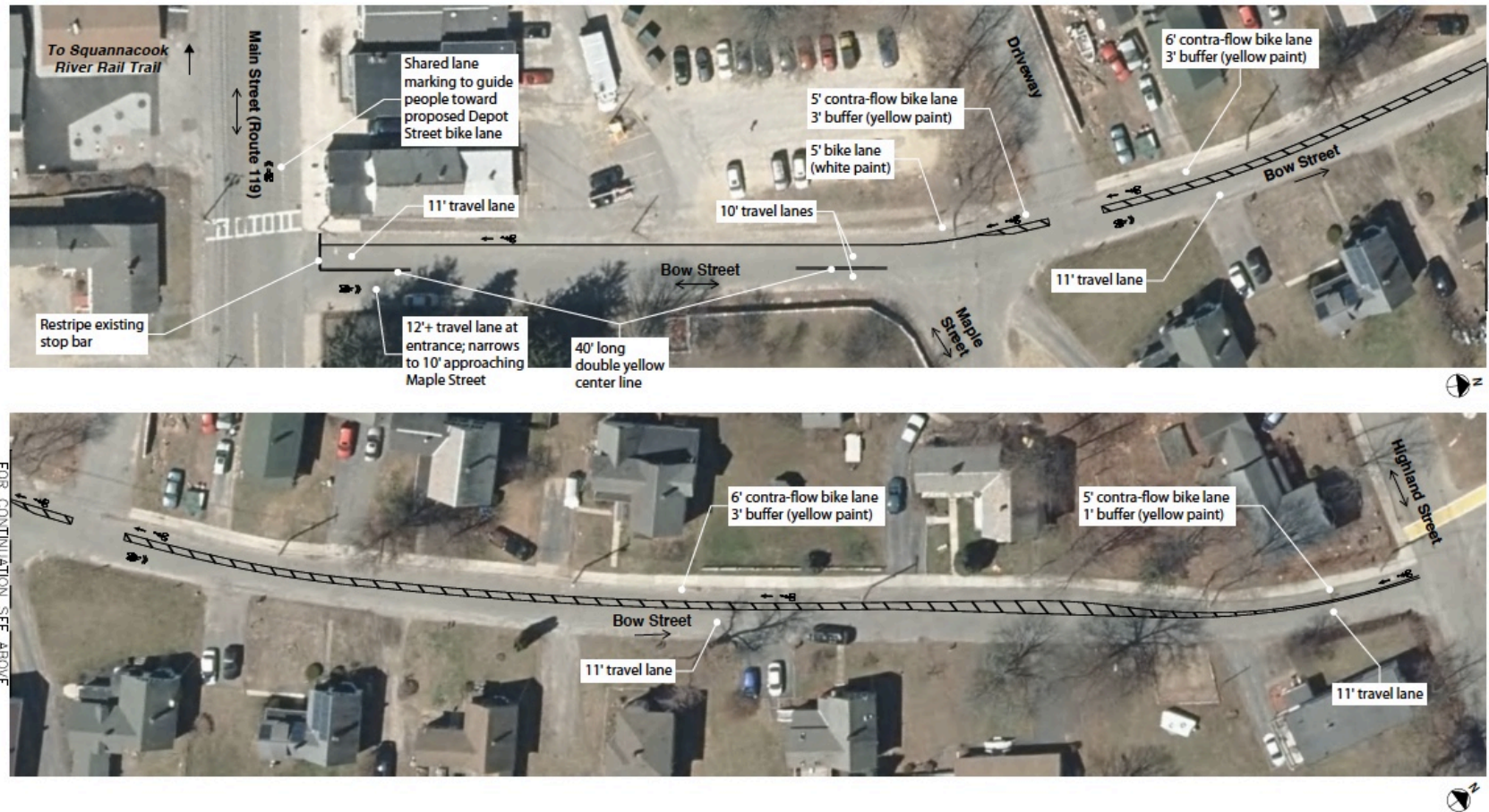


Bike Lanes – Cross Section

Contraflow Bike Lane Bow Street from Maple Street to Highland Street (NB)



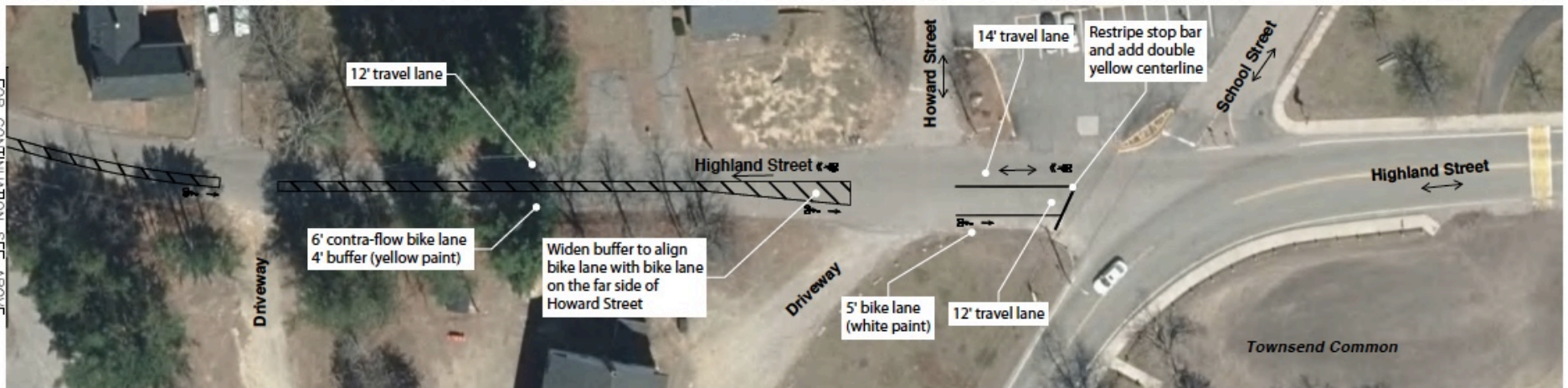
Bow Street from Rt 119 to Highland St



Depot Street to Rt 119



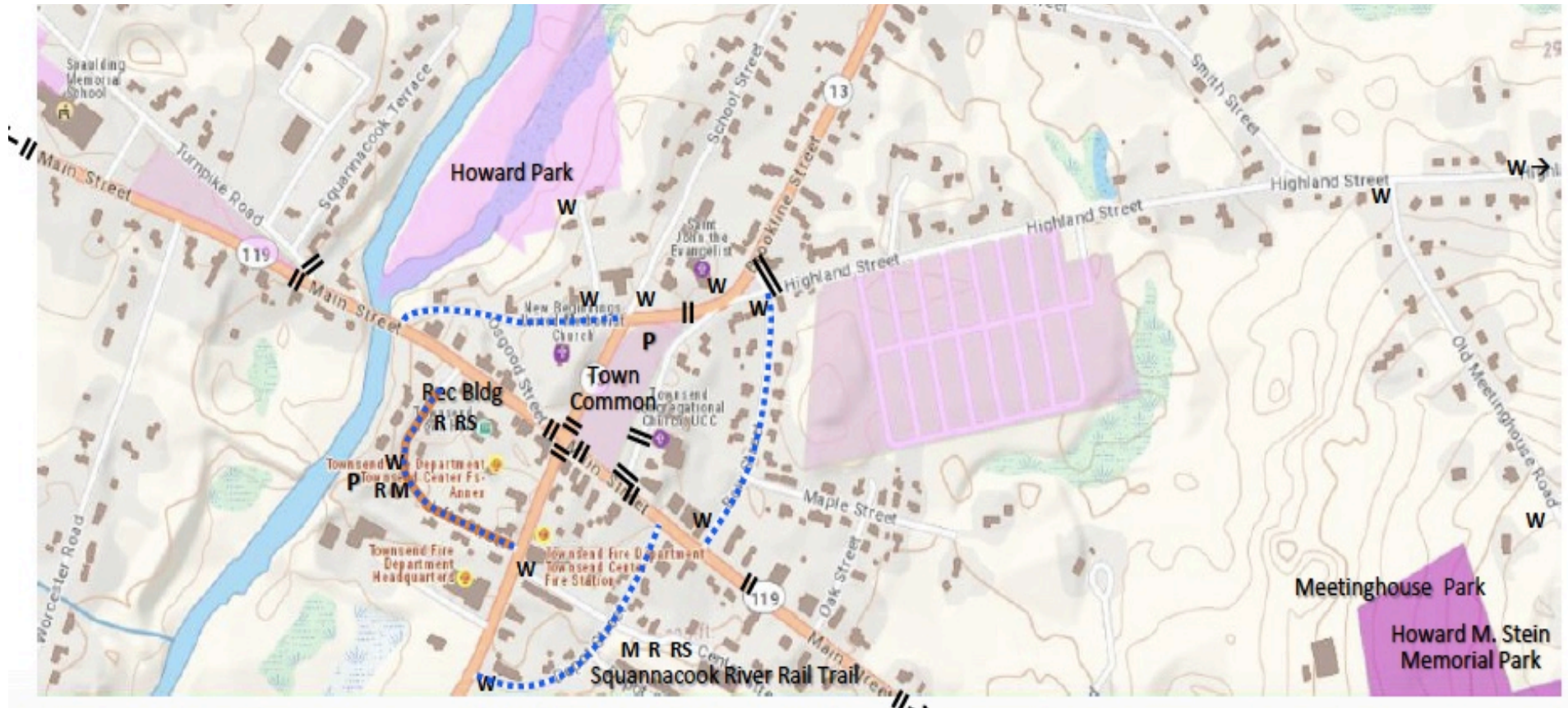
Highland St from Evans to Rt 119



One-Way
Riverbank Tr & Jelfs St

VERONICA KELL

Riverbank Terrace and Jefts St One-way



Shared Winter Streets and Spaces



Shared Winter Streets and Spaces

Thank you!

