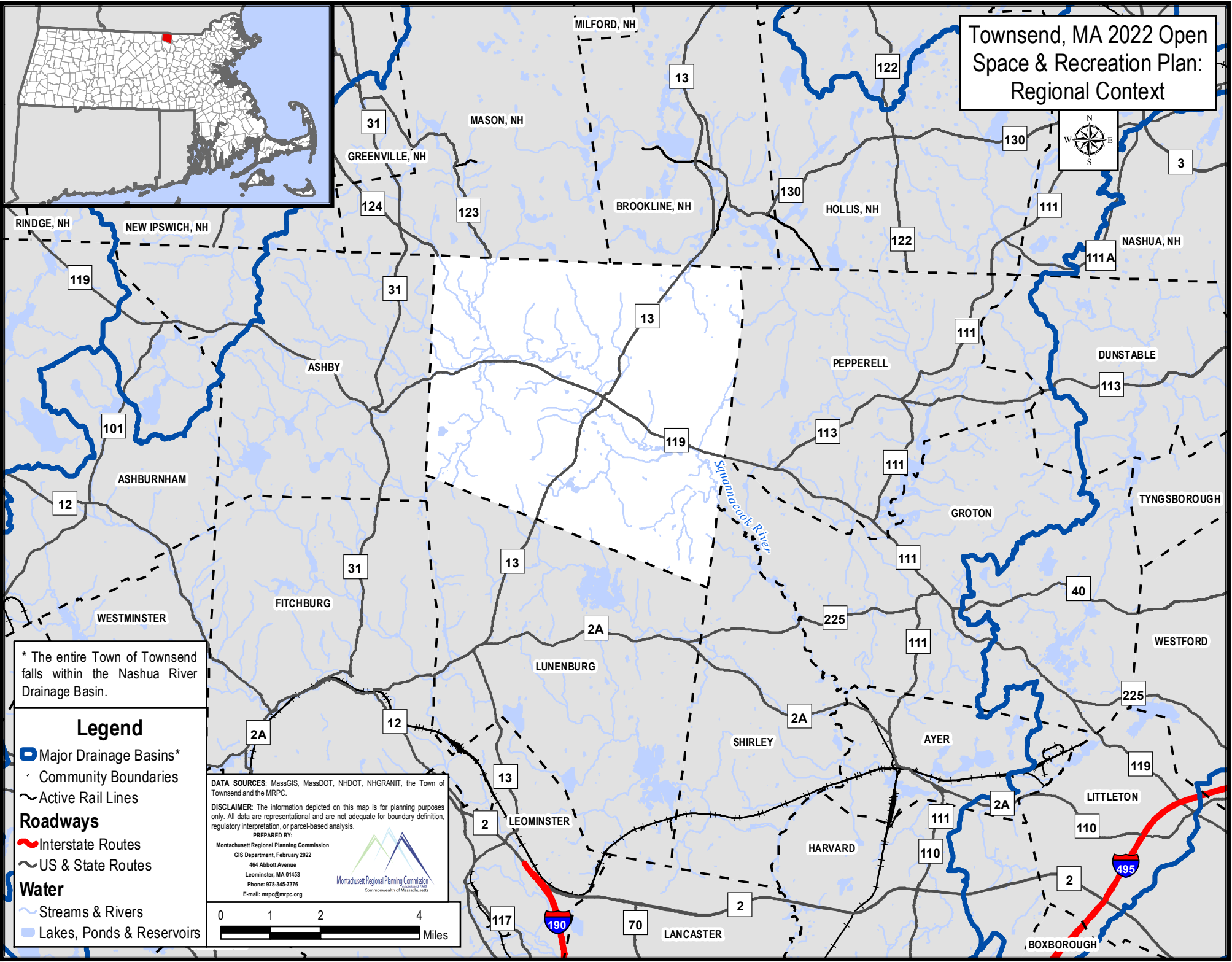


# Townsend, MA 2022 Open Space & Recreation Plan: Regional Context



\* The entire Town of Townsend falls within the Nashua River Drainage Basin.

### Legend

- Major Drainage Basins\*
- Community Boundaries
- Active Rail Lines

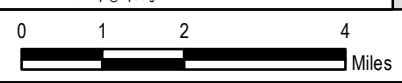
### Roadways

- Interstate Routes
- US & State Routes

### Water

- Streams & Rivers
- Lakes, Ponds & Reservoirs

DATA SOURCES: MassGIS, MassDOT, NHDOT, NHGRANIT, the Town of Townsend and the MRPC.  
 DISCLAIMER: The information depicted on this map is for planning purposes only. All data are representational and are not adequate for boundary definition, regulatory interpretation, or parcel-based analysis.  
 PREPARED BY:  
 Montachusett Regional Planning Commission  
 GIS Department, February 2022  
 464 Abbott Avenue  
 Leominster, MA 01453  
 Phone: 978-345-7376  
 E-mail: mrpc@mrpc.org



# Townsend, MA 2022 Open Space & Recreation Plan: Zoning Map

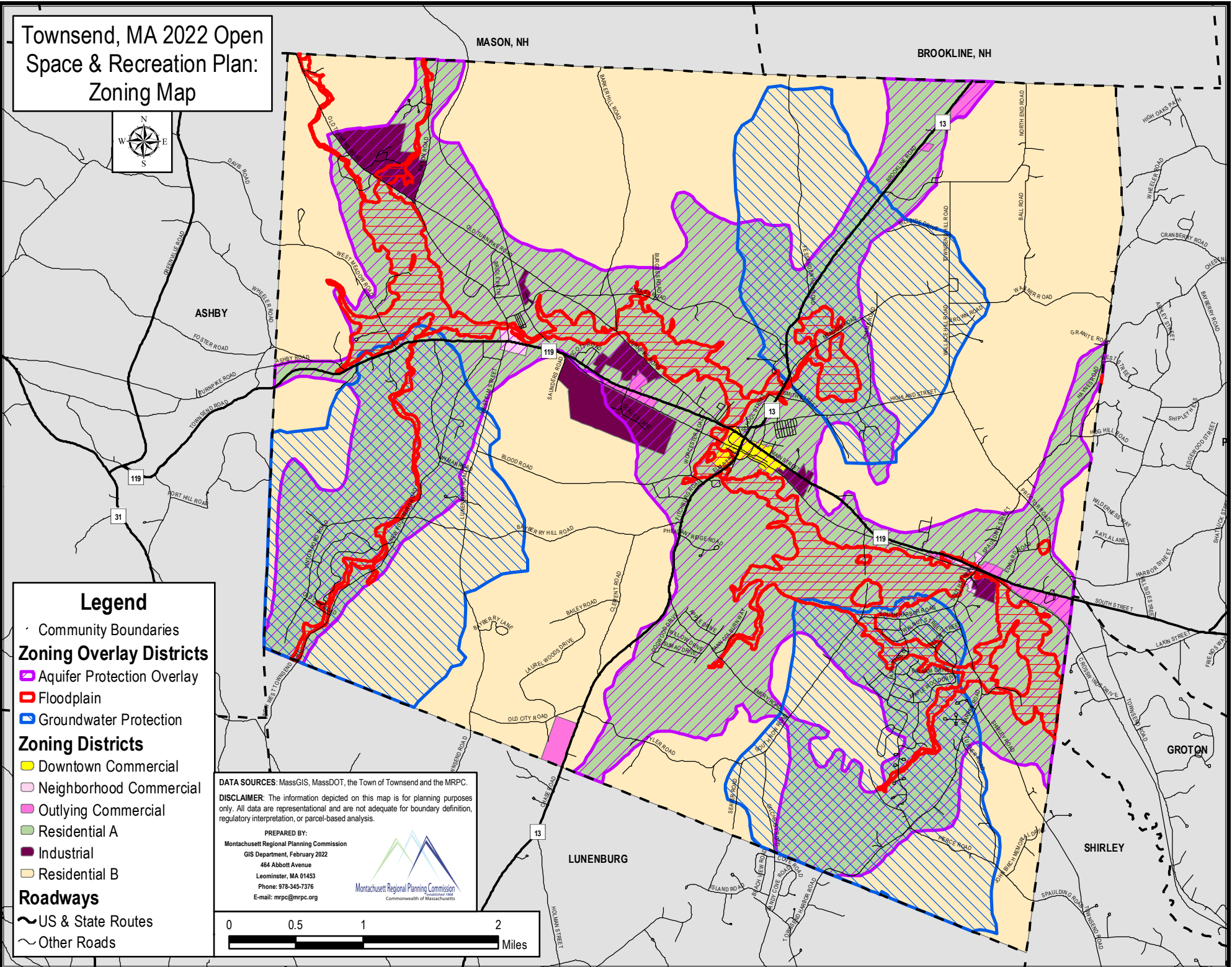
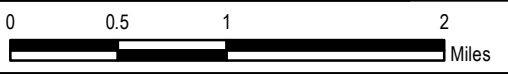


## Legend

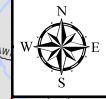
- Community Boundaries
- Zoning Overlay Districts**
- Aquifer Protection Overlay
- Floodplain
- Groundwater Protection
- Zoning Districts**
- Downtown Commercial
- Neighborhood Commercial
- Outlying Commercial
- Residential A
- Industrial
- Residential B
- Roadways**
- US & State Routes
- Other Roads

**DATA SOURCES:** MassGIS, MassDOT, the Town of Townsend and the MRPC.  
**DISCLAIMER:** The information depicted on this map is for planning purposes only. All data are representational and are not adequate for boundary definition, regulatory interpretation, or parcel-based analysis.

PREPARED BY:  
 Montachusett Regional Planning Commission  
 GIS Department, February 2022  
 464 Abbott Avenue  
 Leominster, MA 01453  
 Phone: 978-345-7376  
 E-mail: mrpc@mrpc.org



# Townsend, MA 2022 Open Space & Recreation Plan: Soils & Geologic Features




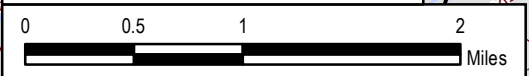
### Legend

- Elevation Contours
- Community Boundaries
- Surficial Geology (1:24,000)**
- Abundant Outcrop and Shallow Bedrock
- Inland Dune Early Postglacial Deposits
- Coarse Glacial Stratified Deposits
- Postglacial Deposits**
- Artificial Fill
- Swamp and Marsh Deposits
- Alluvium
- Till Bedrock**
- Thick Till
- Bedrock Outcrop
- Thin Till
- Roadways**
- US & State Routes
- Other Roads
- Water**
- Streams & Rivers
- Lakes, Ponds & Reservoirs

**DATA SOURCES:** MassGIS, MassDOT, the Town of Townsend and the MRPC.

**DISCLAIMER:** The information depicted on this map is for planning purposes only. All data are representational and are not adequate for boundary definition, regulatory interpretation, or parcel-based analysis.

**PREPARED BY:**  
 Montachusett Regional Planning Commission  
 GIS Department, February 2022  
 464 Abbott Avenue  
 Leominster, MA 01453  
 Phone: 978-345-7376  
 E-mail: mrpc@mrpc.org

# Townsend, MA 2022 Open Space & Recreation Plan: Water Resources III

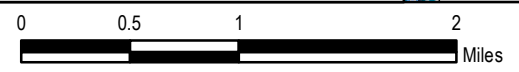


**DATA SOURCES:** MassGIS, MassDOT, the Town of Townsend and the MRPC.

**DISCLAIMER:** The information depicted on this map is for planning purposes only. All data are representational and are not adequate for boundary definition, regulatory interpretation, or parcel-based analysis.

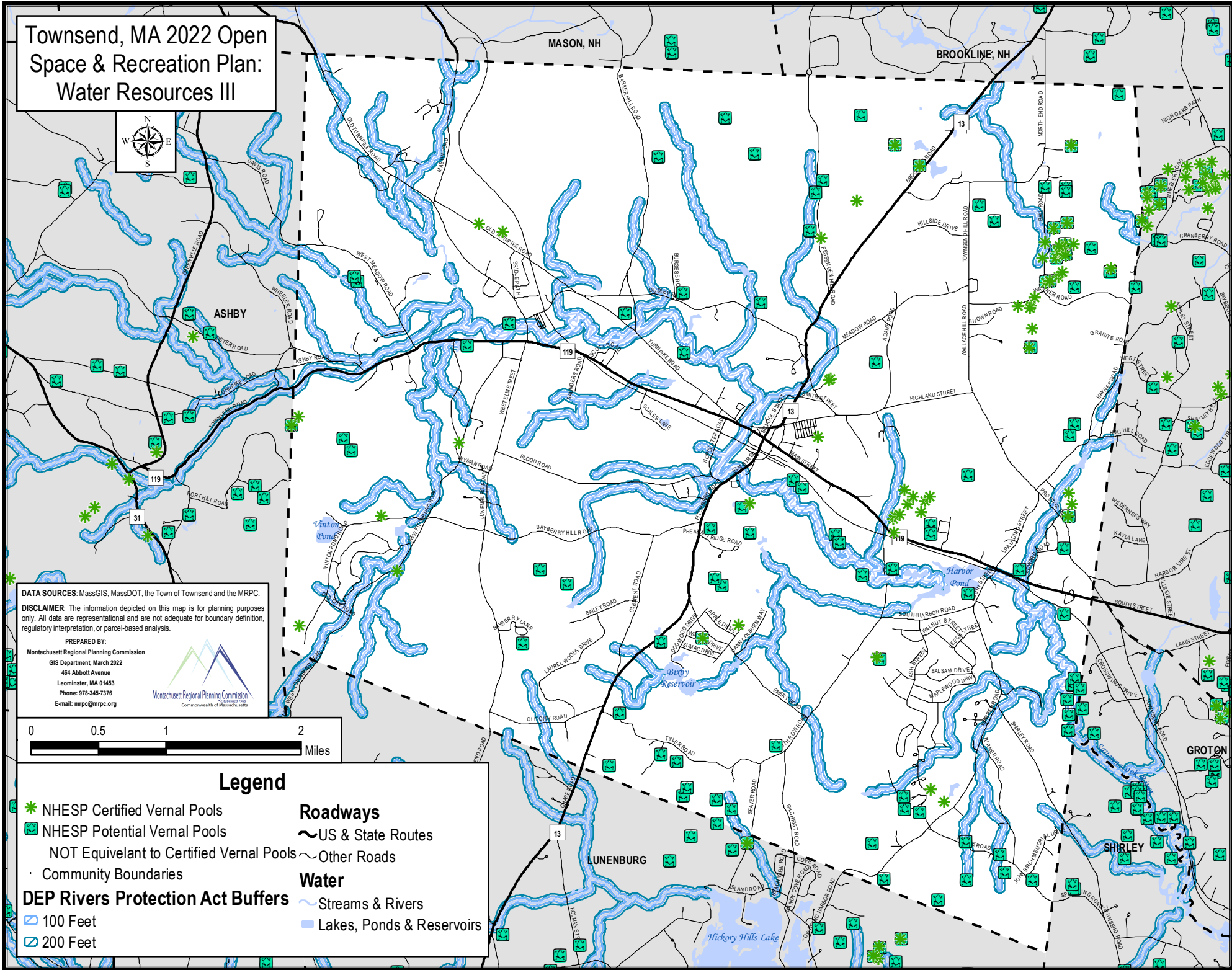
**PREPARED BY:**

Montachusett Regional Planning Commission  
GIS Department, March 2022  
464 Abbott Avenue  
Leominster, MA 01453  
Phone: 978-345-7376  
E-mail: mrpc@mrpc.org



## Legend

- NHESP Certified Vernal Pools
- NHESP Potential Vernal Pools  
NOT Equivalent to Certified Vernal Pools
- Community Boundaries
- DEP Rivers Protection Act Buffers**
  - 100 Feet
  - 200 Feet
- Roadways**
  - US & State Routes
  - Other Roads
- Water**
  - Streams & Rivers
  - Lakes, Ponds & Reservoirs



# Townsend, MA 2022 Open Space & Recreation Plan: Water Resources II



\* The entire Town of Townsend falls within the Nashua River Drainage

DATA SOURCES: MassGIS, MassDOT, the Town of Townsend and the MRPC.

DISCLAIMER: The information depicted on this map is for planning purposes only. All data are representational and are not adequate for boundary definition, regulatory interpretation, or parcel-based analysis.

PREPARED BY:  
Montachusett Regional Planning Commission  
GIS Department, March 2022  
464 Abbott Avenue  
Leominster, MA 01453  
Phone: 978-345-7376  
E-mail: mrpc@mrpc.org



## Legend

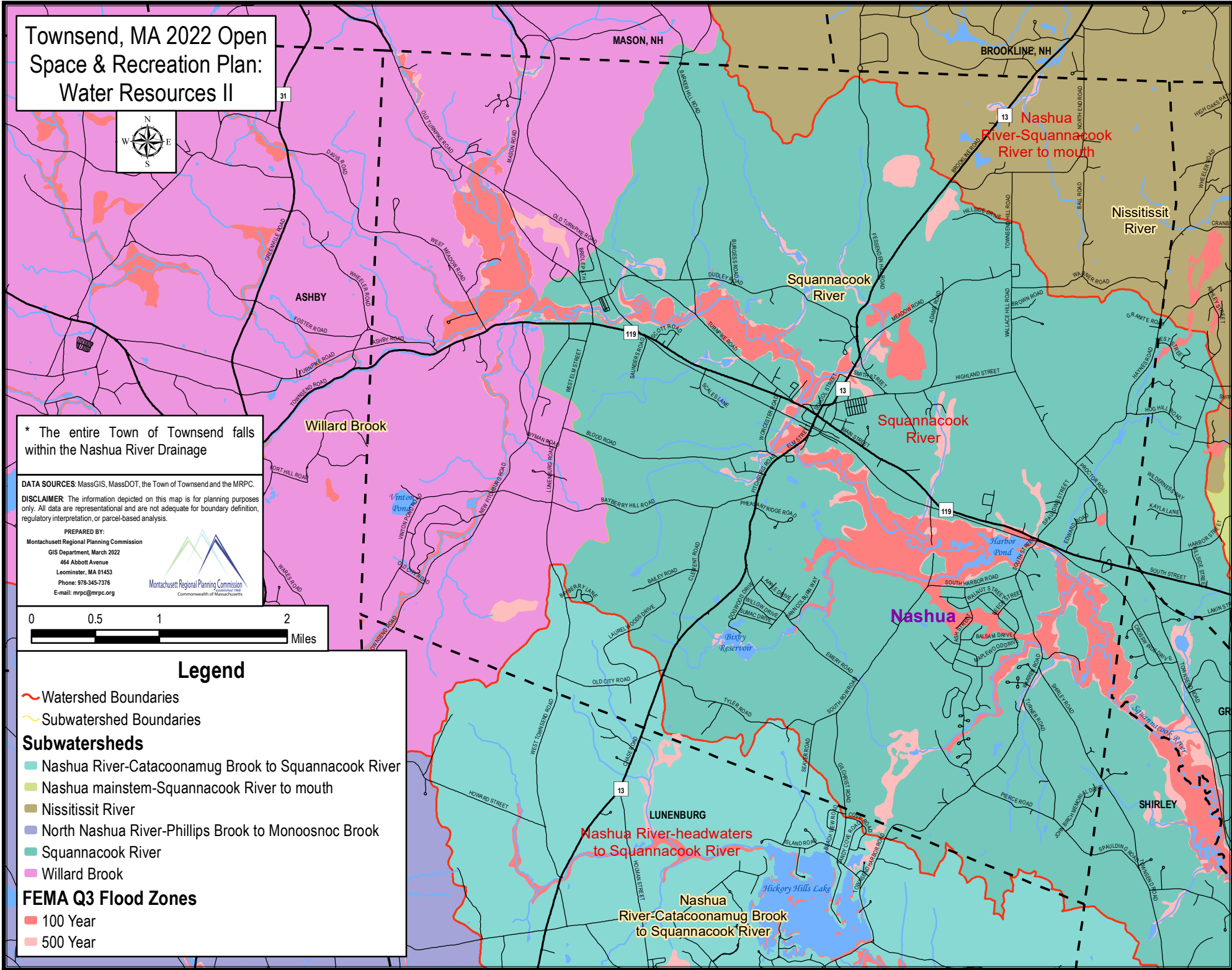
- Watershed Boundaries
- Subwatershed Boundaries

### Subwatersheds

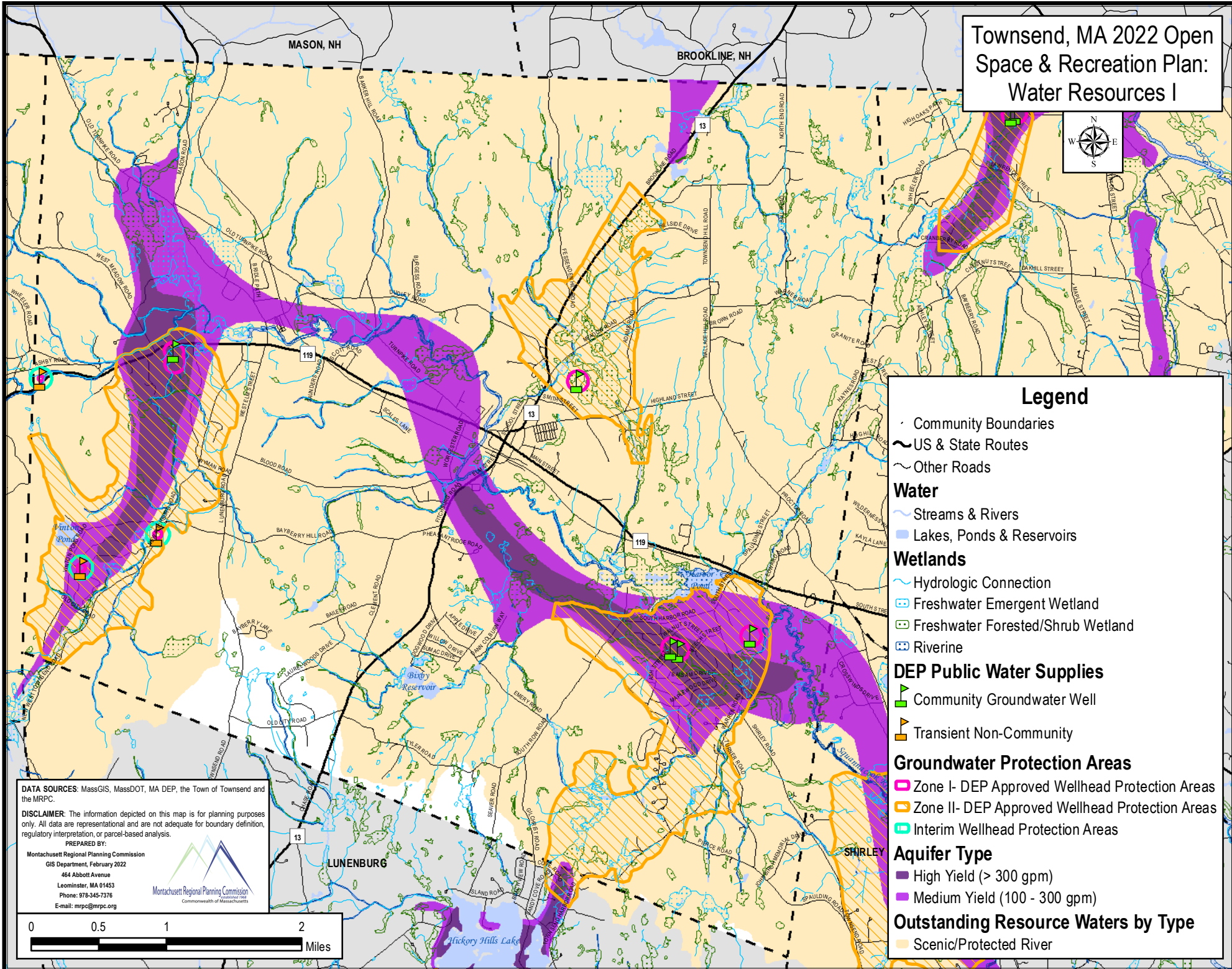
- Nashua River-Catacoonamug Brook to Squannacook River
- Nashua mainstem-Squannacook River to mouth
- Nissittisitt River
- North Nashua River-Phillips Brook to Monoosnoc Brook
- Squannacook River
- Willard Brook

### FEMA Q3 Flood Zones

- 100 Year
- 500 Year



# Townsend, MA 2022 Open Space & Recreation Plan: Water Resources I



### Legend

- Community Boundaries
- US & State Routes
- Other Roads

### Water

- Streams & Rivers
- Lakes, Ponds & Reservoirs

### Wetlands

- Hydrologic Connection
- Freshwater Emergent Wetland
- Freshwater Forested/Shrub Wetland
- Riverine

### DEP Public Water Supplies

- Community Groundwater Well
- Transient Non-Community

### Groundwater Protection Areas

- Zone I- DEP Approved Wellhead Protection Areas
- Zone II- DEP Approved Wellhead Protection Areas
- Interim Wellhead Protection Areas

### Aquifer Type

- High Yield (> 300 gpm)
- Medium Yield (100 - 300 gpm)

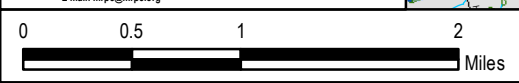
### Outstanding Resource Waters by Type

- Scenic/Protected River

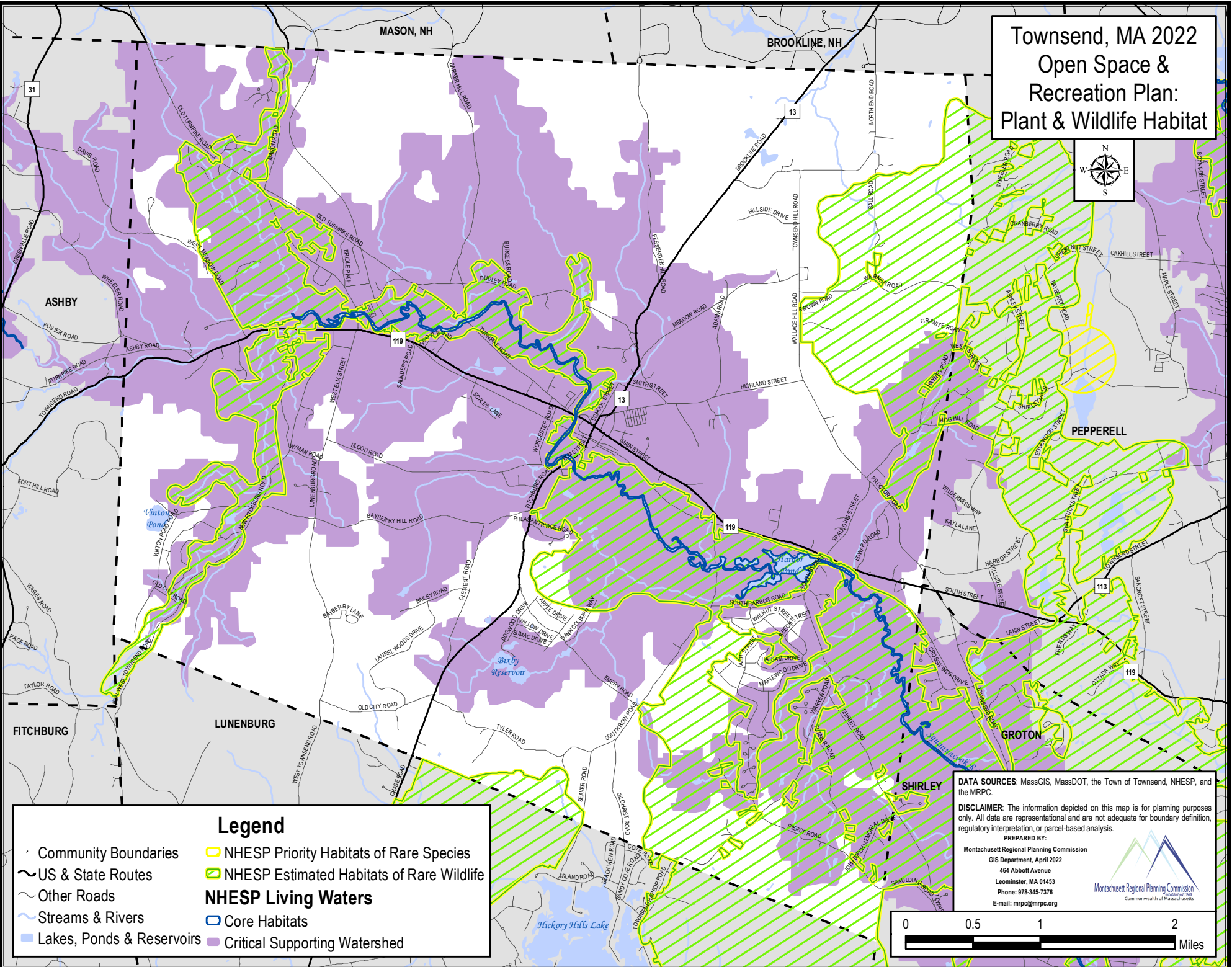
**DATA SOURCES:** MassGIS, MassDOT, MA DEP, the Town of Townsend and the MRPC.

**DISCLAIMER:** The information depicted on this map is for planning purposes only. All data are representational and are not adequate for boundary definition, regulatory interpretation, or parcel-based analysis.

**PREPARED BY:**  
 Montachusett Regional Planning Commission  
 GIS Department, February 2022  
 464 Abbott Avenue  
 Leominster, MA 01453  
 Phone: 978-345-7376  
 E-mail: mrpc@mrpc.org



# Townsend, MA 2022 Open Space & Recreation Plan: Plant & Wildlife Habitat



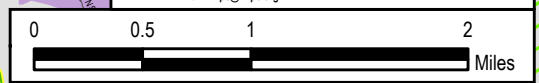
**Legend**

- Community Boundaries
- US & State Routes
- Other Roads
- Streams & Rivers
- Lakes, Ponds & Reservoirs
- NHESP Priority Habitats of Rare Species
- NHESP Estimated Habitats of Rare Wildlife
- NHESP Living Waters
- Core Habitats
- Critical Supporting Watershed

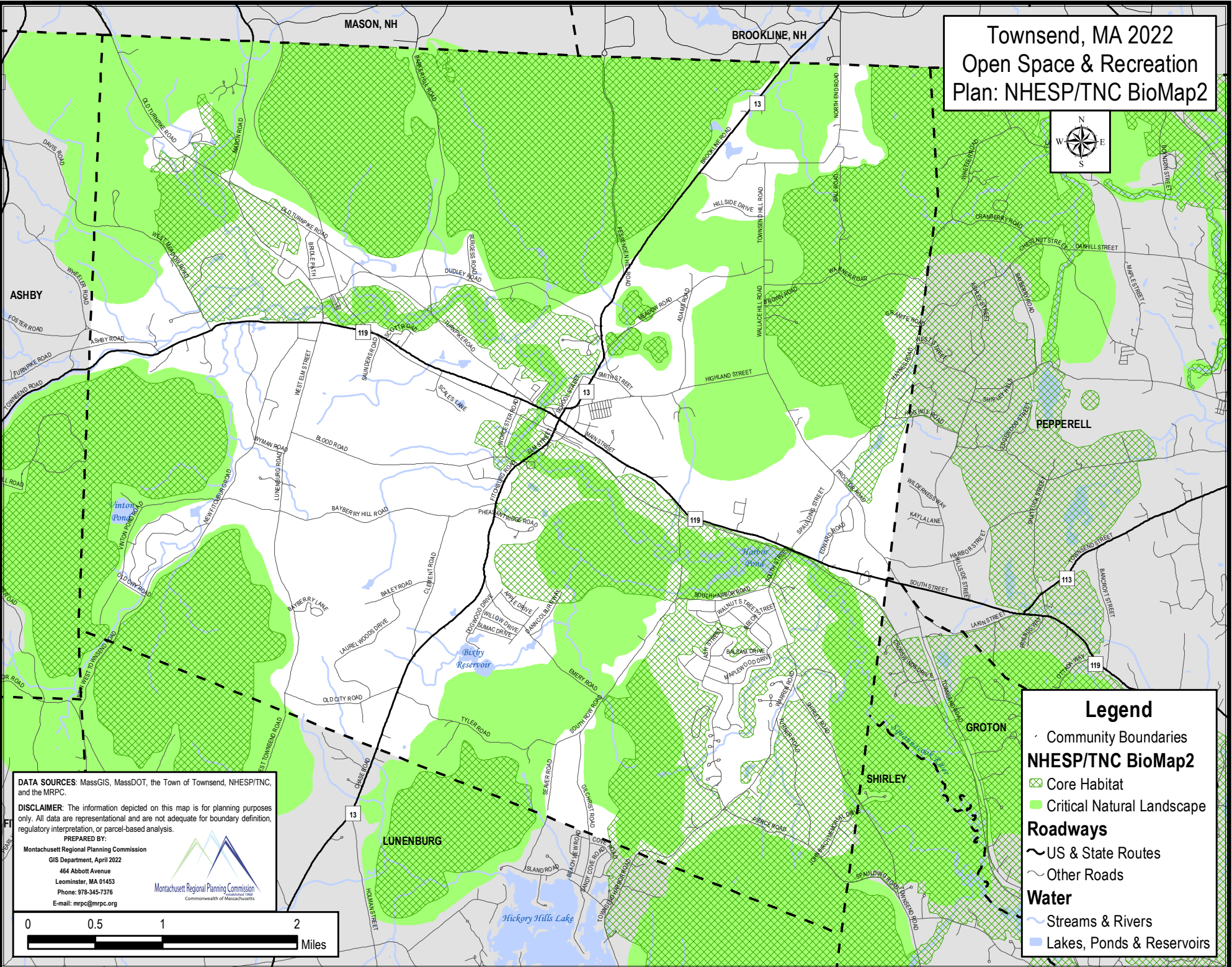
**DATA SOURCES:** MassGIS, MassDOT, the Town of Townsend, NHESP, and the MRPC.

**DISCLAIMER:** The information depicted on this map is for planning purposes only. All data are representational and are not adequate for boundary definition, regulatory interpretation, or parcel-based analysis.

**PREPARED BY:**  
 Montachusett Regional Planning Commission  
 GIS Department, April 2022  
 464 Abbott Avenue  
 Leominster, MA 01453  
 Phone: 978-345-7376  
 E-mail: mrpc@mrpc.org



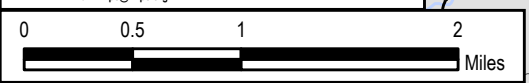
# Townsend, MA 2022 Open Space & Recreation Plan: NHESP/TNC BioMap2



**DATA SOURCES:** MassGIS, MassDOT, the Town of Townsend, NHESP/TNC, and the MRPC.

**DISCLAIMER:** The information depicted on this map is for planning purposes only. All data are representational and are not adequate for boundary definition, regulatory interpretation, or parcel-based analysis.

**PREPARED BY:**  
 Montachusett Regional Planning Commission  
 GIS Department, April 2022  
 464 Abbott Avenue  
 Leominster, MA 01453  
 Phone: 978-345-7376  
 E-mail: mrpc@mrpc.org

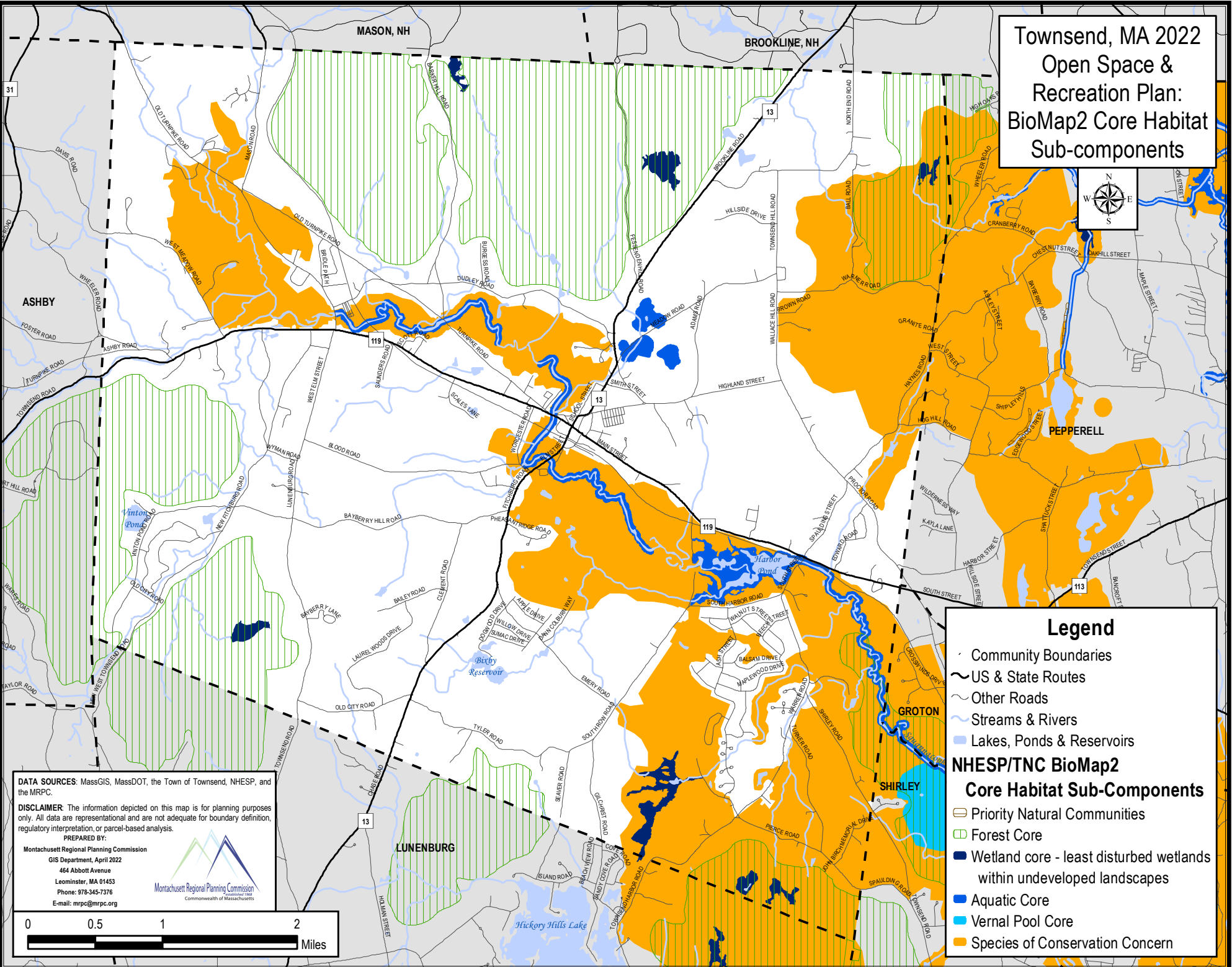


### Legend

- Community Boundaries
- NHESP/TNC BioMap2**
- ▨ Core Habitat
- Critical Natural Landscape
- Roadways**
- US & State Routes
- ~ Other Roads
- Water**
- ~ Streams & Rivers
- Lakes, Ponds & Reservoirs



# Townsend, MA 2022 Open Space & Recreation Plan: BioMap2 Core Habitat Sub-components



### Legend

- Community Boundaries
- ~ US & State Routes
- ~ Other Roads
- ~ Streams & Rivers
- ~ Lakes, Ponds & Reservoirs


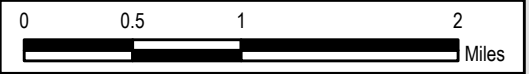
### NHESP/TNC BioMap2 Core Habitat Sub-Components

- Priority Natural Communities
- Forest Core
- Wetland core - least disturbed wetlands within undeveloped landscapes
- Aquatic Core
- Vernal Pool Core
- Species of Conservation Concern

**DATA SOURCES:** MassGIS, MassDOT, the Town of Townsend, NHESP, and the MRPC.

**DISCLAIMER:** The information depicted on this map is for planning purposes only. All data are representational and are not adequate for boundary definition, regulatory interpretation, or parcel-based analysis.

**PREPARED BY:**  
 Montachusett Regional Planning Commission  
 GIS Department, April 2022  
 464 Abbott Avenue  
 Leominster, MA 01453  
 Phone: 978-345-7376  
 E-mail: mrpc@mrpc.org

# Townsend, MA 2022 Open Space & Recreation Plan: BioMap2 Critical Natural Landscape Sub-components

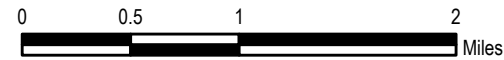


**DATA SOURCES:** MassGIS, MassDOT, the Town of Townsend, NHESP, and the MRPC.

**DISCLAIMER:** The information depicted on this map is for planning purposes only. All data are representational and are not adequate for boundary definition, regulatory interpretation, or parcel-based analysis.

PREPARED BY:

Montachusett Regional Planning Commission  
GIS Department, April 2022  
464 Abbott Avenue  
Leominster, MA 01453  
Phone: 978-345-7376  
E-mail: mrpc@mrpc.org

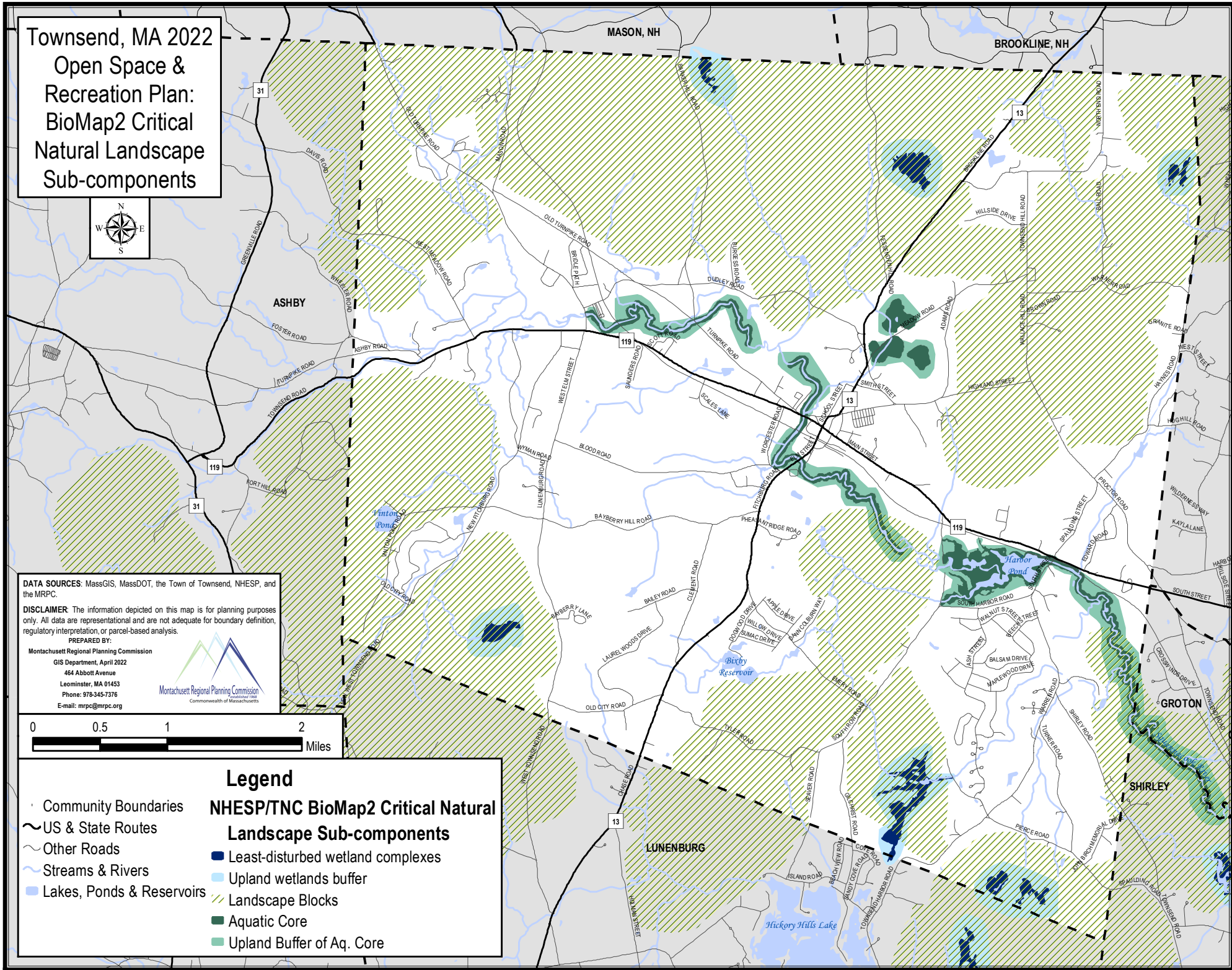


## Legend

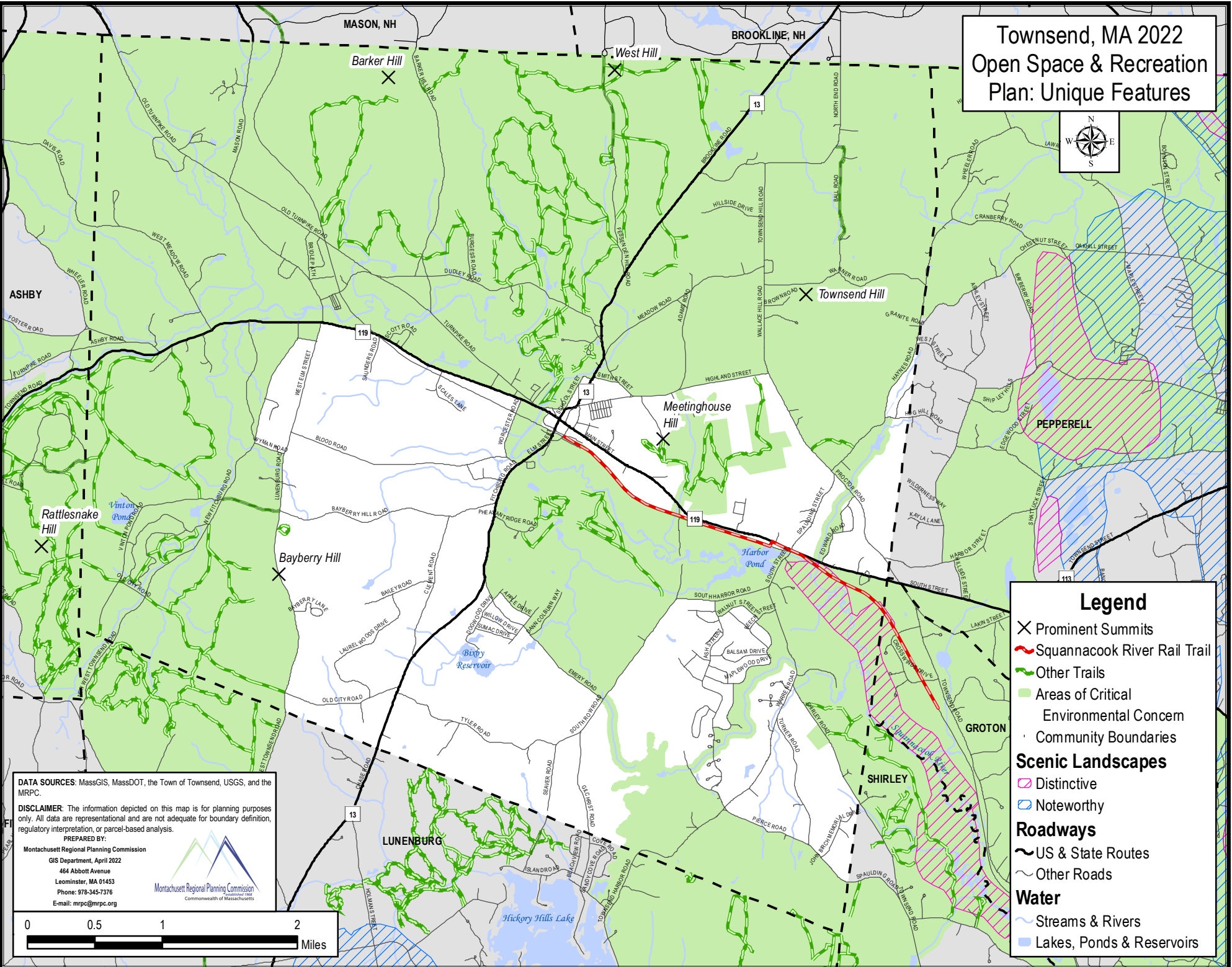
- Community Boundaries
- US & State Routes
- Other Roads
- Streams & Rivers
- Lakes, Ponds & Reservoirs

## NHESP/TNC BioMap2 Critical Natural Landscape Sub-components

- Least-disturbed wetland complexes
- Upland wetlands buffer
- Landscape Blocks
- Aquatic Core
- Upland Buffer of Aq. Core



# Townsend, MA 2022 Open Space & Recreation Plan: Unique Features



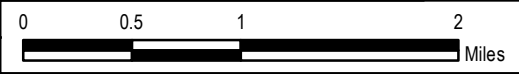
### Legend

- ✕ Prominent Summits
- 🚆 Squannacook River Rail Trail
- 🌿 Other Trails
- 🟢 Areas of Critical Environmental Concern
- - - Community Boundaries
- Scenic Landscapes**
- 🟡 Distinctive
- 🟦 Noteworthy
- Roadways**
- 🛣️ US & State Routes
- 🛤️ Other Roads
- Water**
- 🌊 Streams & Rivers
- 🟦 Lakes, Ponds & Reservoirs

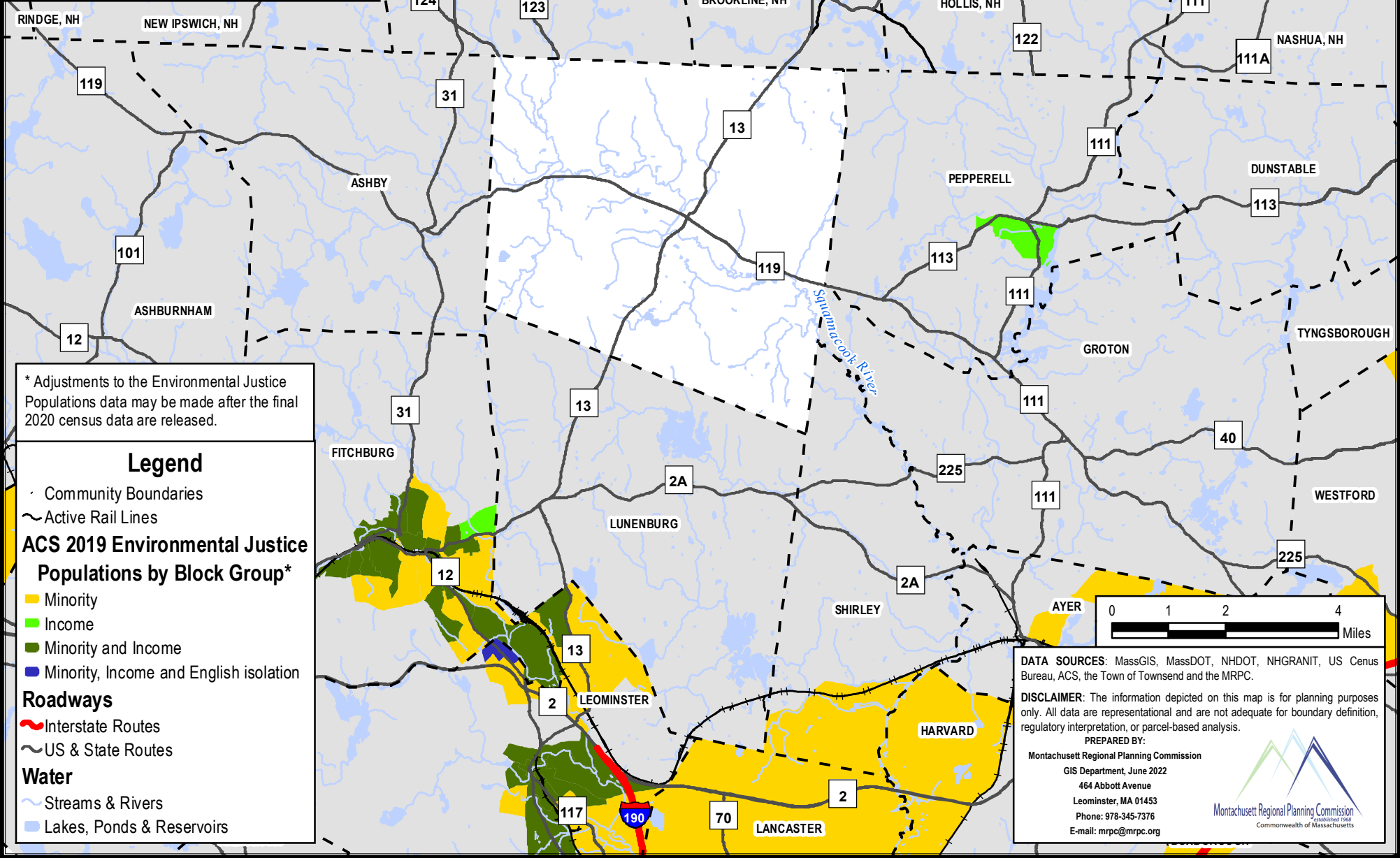
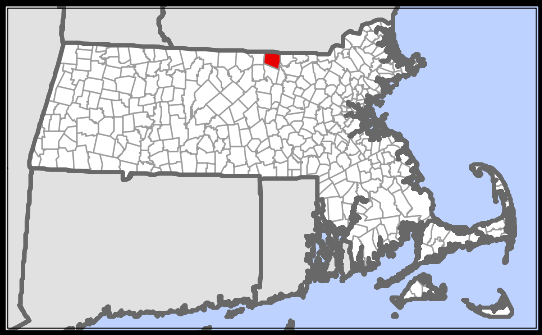
**DATA SOURCES:** MassGIS, MassDOT, the Town of Townsend, USGS, and the MRPC.

**DISCLAIMER:** The information depicted on this map is for planning purposes only. All data are representational and are not adequate for boundary definition, regulatory interpretation, or parcel-based analysis.

**PREPARED BY:**  
 Montachusett Regional Planning Commission  
 GIS Department, April 2022  
 464 Abbott Avenue  
 Leominster, MA 01453  
 Phone: 978-345-7376  
 E-mail: mrpc@mrpc.org



# Townsend, MA 2022 Open Space & Recreation Plan: Environmental Justice



\* Adjustments to the Environmental Justice Populations data may be made after the final 2020 census data are released.

**Legend**

- Community Boundaries
- ~ Active Rail Lines

**ACS 2019 Environmental Justice Populations by Block Group\***

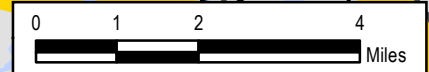
- Minority
- Income
- Minority and Income
- Minority, Income and English isolation

**Roadways**

- Interstate Routes
- US & State Routes

**Water**

- Streams & Rivers
- Lakes, Ponds & Reservoirs



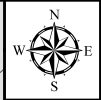
**DATA SOURCES:** MassGIS, MassDOT, NHDOT, NHGRANT, US Census Bureau, ACS, the Town of Townsend and the MRPC.

**DISCLAIMER:** The information depicted on this map is for planning purposes only. All data are representational and are not adequate for boundary definition, regulatory interpretation, or parcel-based analysis.

**PREPARED BY:**  
 Montachusett Regional Planning Commission  
 GIS Department, June 2022  
 464 Abbott Avenue  
 Leominster, MA 01453  
 Phone: 978-345-7376  
 E-mail: mrpc@mrpc.org



# Townsend, MA 2022 Open Space & Recreation Plan: Open Space Inventory



## Legend

- Squannacook River Rail Trail
- Conservation Restrictions
- Community Boundaries
- Chapter Lands**
  - Chapter 61
  - Chapter 61A
  - Chapter 61B
- Roadways**
  - US & State Routes
  - Other Roads
- Water**
  - Streams & Rivers
  - Lakes, Ponds & Reservoirs
- Open Space: by Level of Protection, Ownership, & Purpose**
  - Permanent, Public - Conservation
  - Permanent, Public - Conservation/Recreation
  - Permanent, Public - Recreation
  - Permanent, Private - Conservation
  - Limited, Public - Conservation
  - Limited, Public - Conservation/Recreation
  - Limited, Public - Recreation
  - Limited, Private - Conservation
  - Unprotected, Private - Recreation
  - Unprotected, Public - Conservation
  - Unprotected, Public - Conservation/Recreation

**DATA SOURCES:** MassGIS, MassDOT, the Town of Townsend and the MRPC.  
**DISCLAIMER:** The information depicted on this map is for planning purposes only. All data are representational and are not adequate for boundary definition, regulatory interpretation, or parcel-based analysis.

PREPARED BY:  
 Montachusett Regional Planning Commission  
 GIS Department, June 2023  
 464 Abbott Avenue  
 Leominster, MA 01453  
 Phone: 978-345-7376  
 E-mail: mrpc@mrpc.org

