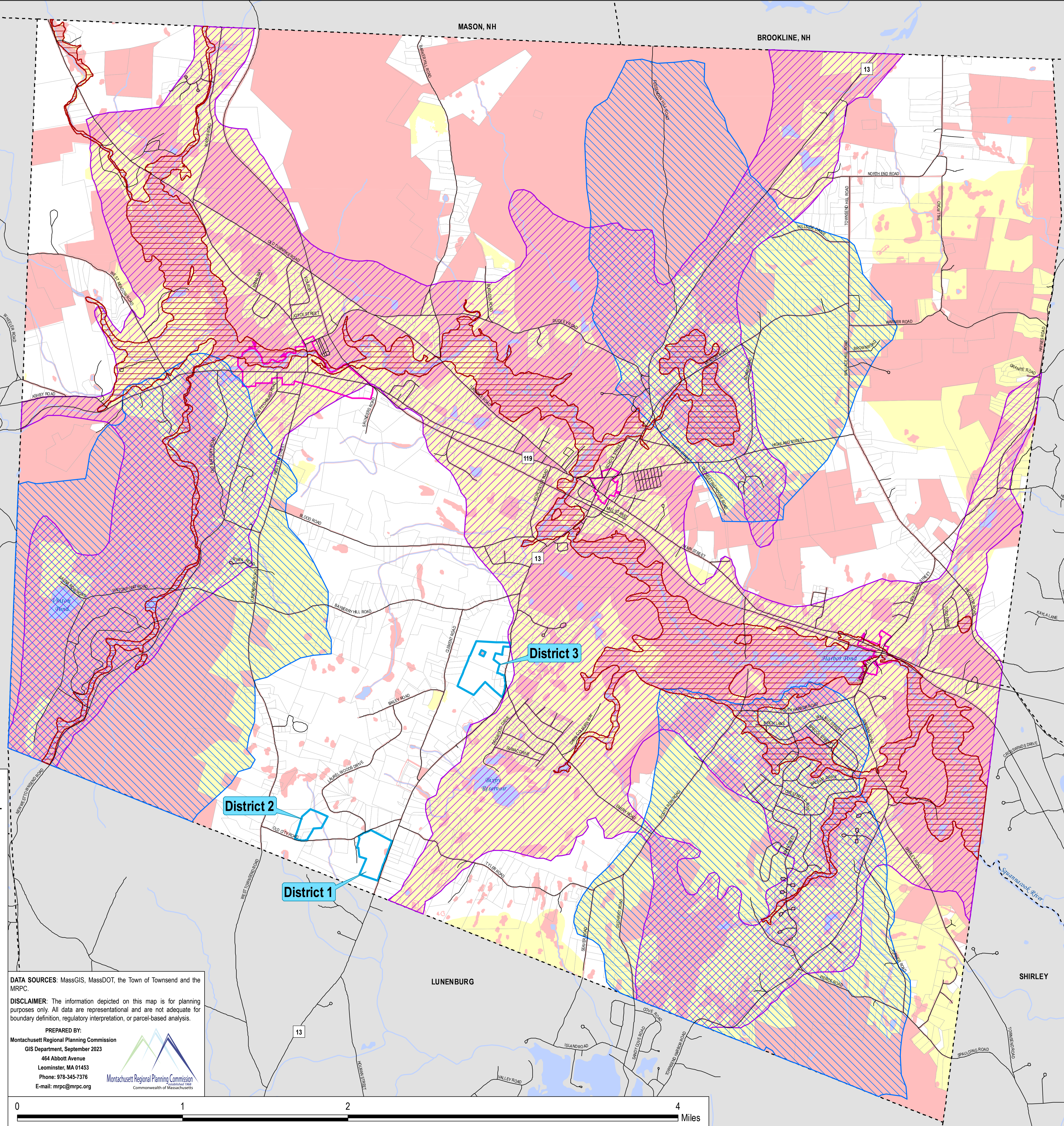
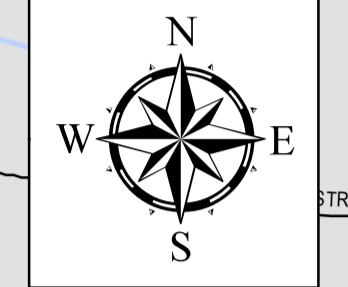


# Townsend, MA: Non-Feasible MBTA Zone Areas & Potential MBTA Communities- Compliant Districts



**Legend**

- Potential MBTA Communities-Compliant Districts
- Historic Districts
- Non-Feasible Areas
- Feasible but Sensitive Lands
- Parcel Boundaries
- Community Boundaries
- Active Rail Lines
- Zoning Overlay Districts**
- Aquifer Protection Overlay
- Floodplain
- Groundwater Protection
- Roadways**
- US & State Routes
- Other Roads
- Water**
- Streams & Rivers
- Lakes, Ponds & Reservoirs

**DATA SOURCES:** MassGIS, MassDOT, the Town of Townsend and the MRPC.

**DISCLAIMER:** The information depicted on this map is for planning purposes only. All data are representational and are not adequate for boundary definition, regulatory interpretation, or parcel-based analysis.

**PREPARED BY:**  
 Montachusett Regional Planning Commission  
 GIS Department, September 2023  
 464 Abbott Avenue  
 Leominster, MA 01453  
 Phone: 978-345-7376  
 E-mail: mrpc@mrpc.org

